



Thailand – Sept 5<sup>th</sup> to Sept 12<sup>th</sup> 2020  
 Contest Dates: January 1st to March 31st 2020

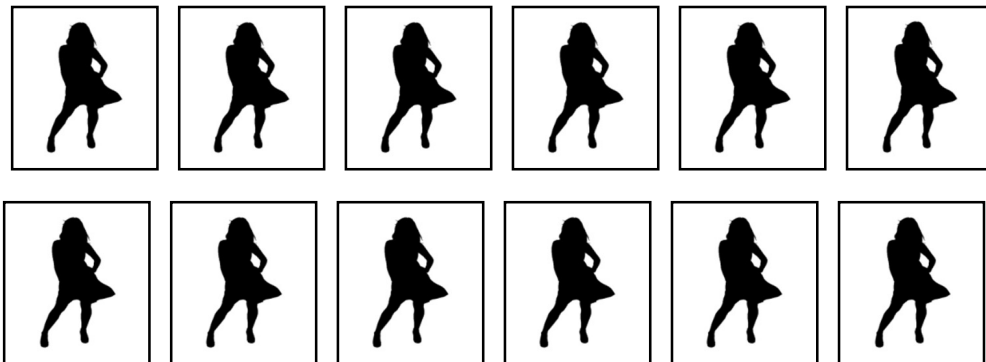
**SENIOR DIRECTOR REQUIREMENTS**

**\$30,000 Personal Retail Sales & 12 New Active Consultants**

*Personal Retail Sales*

|          |          |          |          |          |          |          |          |          |                 |
|----------|----------|----------|----------|----------|----------|----------|----------|----------|-----------------|
| \$21,000 | \$22,000 | \$23,000 | \$24,000 | \$25,000 | \$26,000 | \$27,000 | \$28,000 | \$29,000 | <b>\$30,000</b> |
| \$11,000 | \$12,000 | \$13,000 | \$14,000 | \$15,000 | \$16,000 | \$17,000 | \$18,000 | \$19,000 | \$20,000        |
| \$1000   | \$2000   | \$3000   | \$4000   | \$5000   | \$6000   | \$7000   | \$8000   | \$9000   | \$10,000        |

*New Active Consultants*



**ADDITIONAL INCENTIVE DETAILS**

**Incentive Eligibility:**

The first 40 Senior Directors to Senior Executive Directors in the United States (including Puerto Rico), Canada, and Australia\* who hit the requirements will earn their spot on the Incentive trip.

**Guest Buy-In: \$2,500**